



UEFA
CHAMPIONS
LEAGUE

Tactical Line-ups: full time

Matchday 2 - Wednesday 2 October 2019

Group H - Stade Pierre Mauroy - Villeneuve d'Ascq

LOSC Lille 1 - 2 **Chelsea FC**

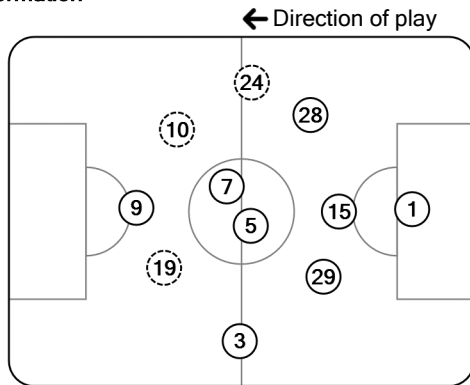
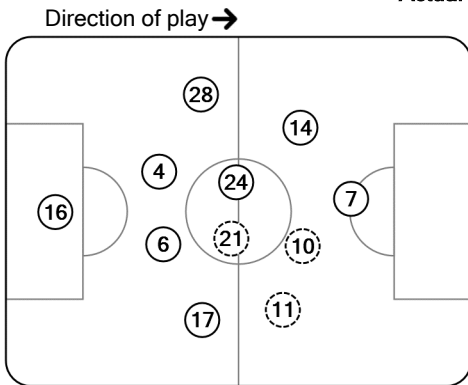
62' (in) 12 Yusuf Yazıcı / (out) 10 Ikoné
69' (in) 18 Renato Sanches / (out) 21 André
75' (in) 8 Xeka / (out) 11 Araújo

67' (in) 20 Hudson-Odoi / (out) 24 James
85' (in) 11 Pedro Rodríguez / (out) 10 Willian
87' (in) 17 Kovačić / (out) 19 Mount

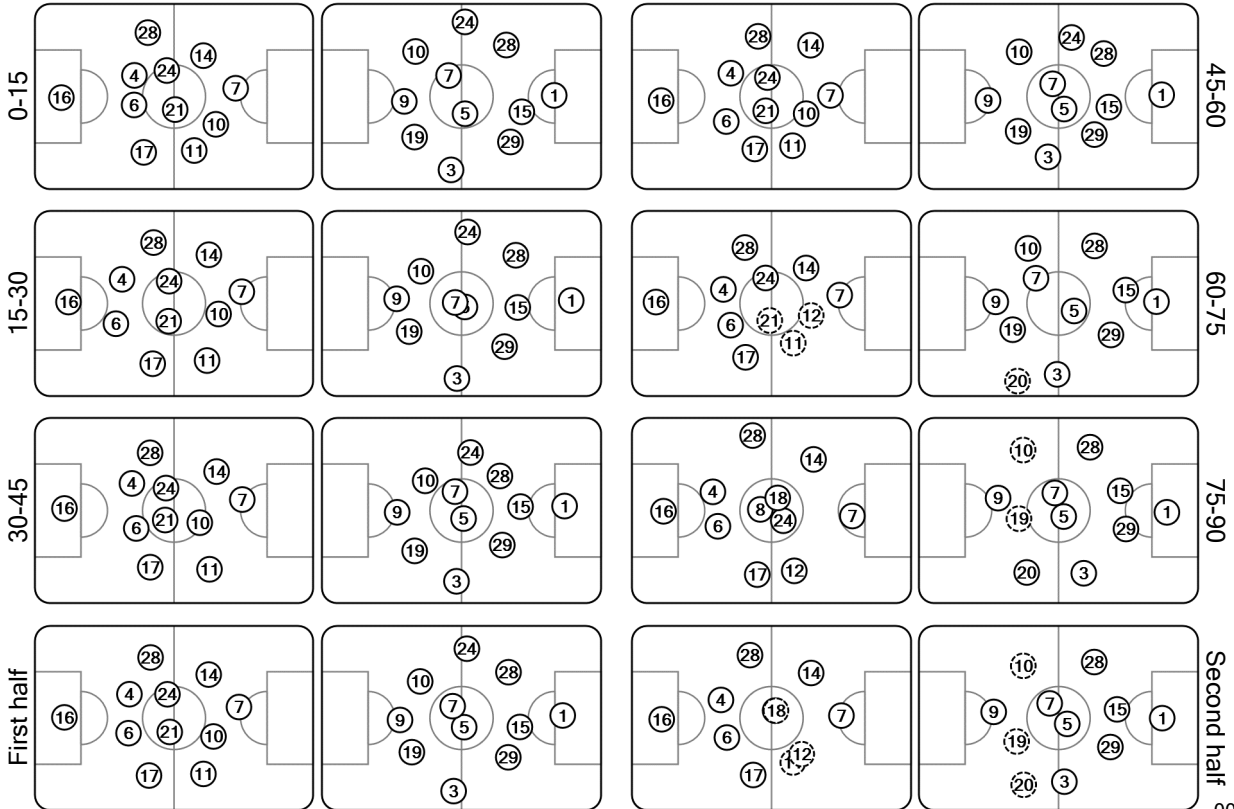
Total time played: 96'29"
38% - 21'38" Ball possession 62% - 35'39"

Actual formation

- Maignan 16
- Gabriel 4
- Fonte 6
- Osimhen 7
- Ikoné 10
- Araújo 11
- Bamba 14
- Zeki Çelik 17
- André 21
- Soumaré 24
- Mandava 28
- Xeka 8
- Yusuf Yazıcı 12
- Renato Sanches 18



- 1 Kupa
- 3 Alonso
- 5 Jorginho
- 7 Kanté
- 9 Abraham
- 10 Willian
- 15 Zouma
- 19 Mount
- 24 James
- 28 Azpilicueta
- 29 Tomori
- 11 Pedro Rodríguez
- 17 Kovačić
- 20 Hudson-Odoi



○ Did not play the entire match ⚡ Substitution Ⓜ Sent off

00:11:30CET
03 Oct 2019