



Tactical lineups: Full time

Final - Friday 27 August 2010

Stade Louis II - Monaco

FC Internazionale

0 - 2

Atlético de Madrid

68' (In) 27 Pandev / (Out) 5 Stanković
 79' (In) 29 Coutinho / (Out) 10 Sneijder

69' (In) 11 Mérida / (Out) 19 Reyes
 82' (In) 9 Jurado / (Out) 7 Forlán
 90'+1 (In) 6 Camacho / (Out) 20 Simão

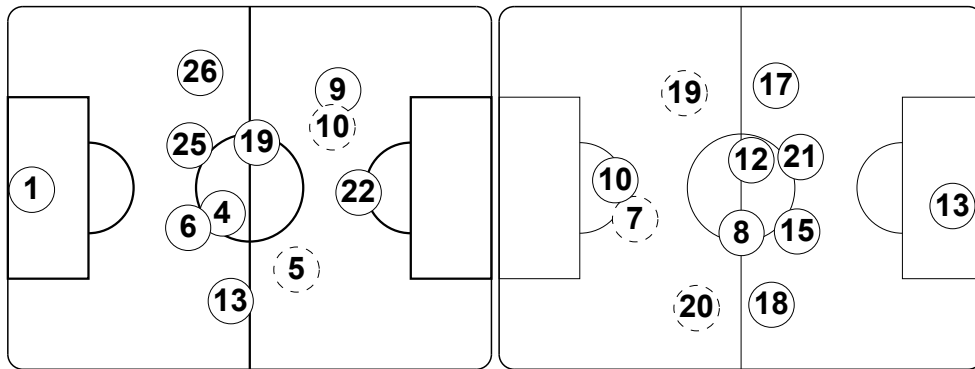
Total time played: 92'08"
52% - 24'23" Ball possession 48% - 22'48"

Actual formation

Direction of play --> <-- Direction of play

- Júlio César 1
- Zanetti 4
- Stanković 5
- Lucio 6
- Eto'o 9
- Sneijder 10
- Maicon 13
- Cambiasso 19
- Milito 22
- Samuel 25
- Chivu 26

- Pandev 27
- Coutinho 29

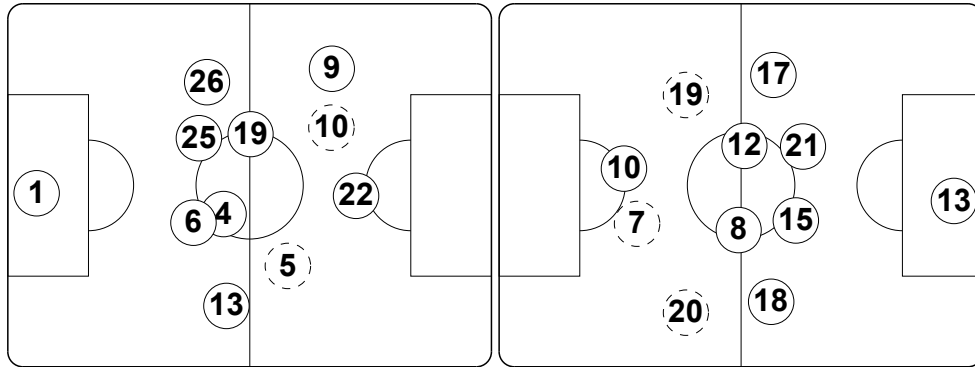


- 13 de Gea
- 7 Forlán
- 8 Raúl García
- 10 Agüero
- 12 Paulo Assunção
- 15 Godín
- 17 Ujfalusi
- 18 Álvaro Domínguez
- 19 Reyes
- 20 Simão
- 21 Perea

- 6 Camacho
- 9 Jurado
- 11 Mérida

Direction of play --> <-- Direction of play

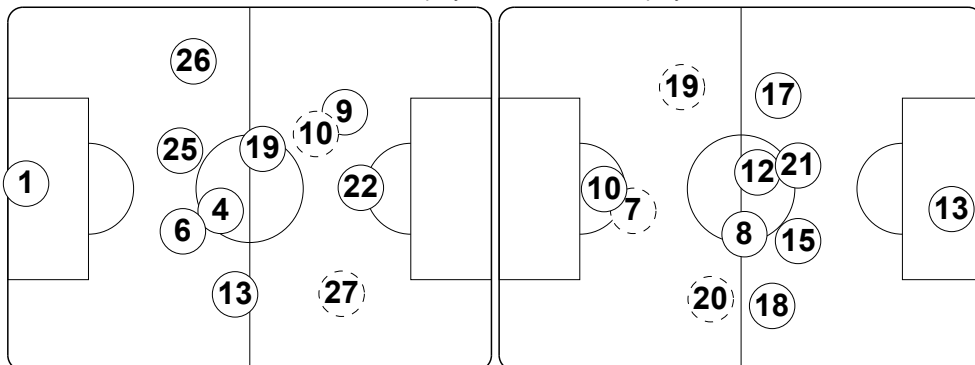
First half formation



First half formation

Direction of play --> <-- Direction of play

Second half formation



Second half formation

did not play the entire match

substitution

11:02:19 CET
1 Sep 2010